

PROGETTO ESECUTIVO



PNRR PIANO NAZIONALE DI RIPRESA E RESILIENZA

Missione 1 - Digitalizzazione, innovazione, competitività e cultura, Componente 3 - Cultura 4.0 (M1C3)
Misura 2 "Rigenerazione di piccoli siti culturali, patrimonio culturale, religioso e rurale"
Investimento 2.3: "Programmi per valorizzare l'identità dei luoghi: parchi e giardini storici"

RESTAURO E VALORIZZAZIONE
DEL GIARDINO STORICO DI VILLA CAHEN "LA SELVA"

Committente
Comune di Allerona



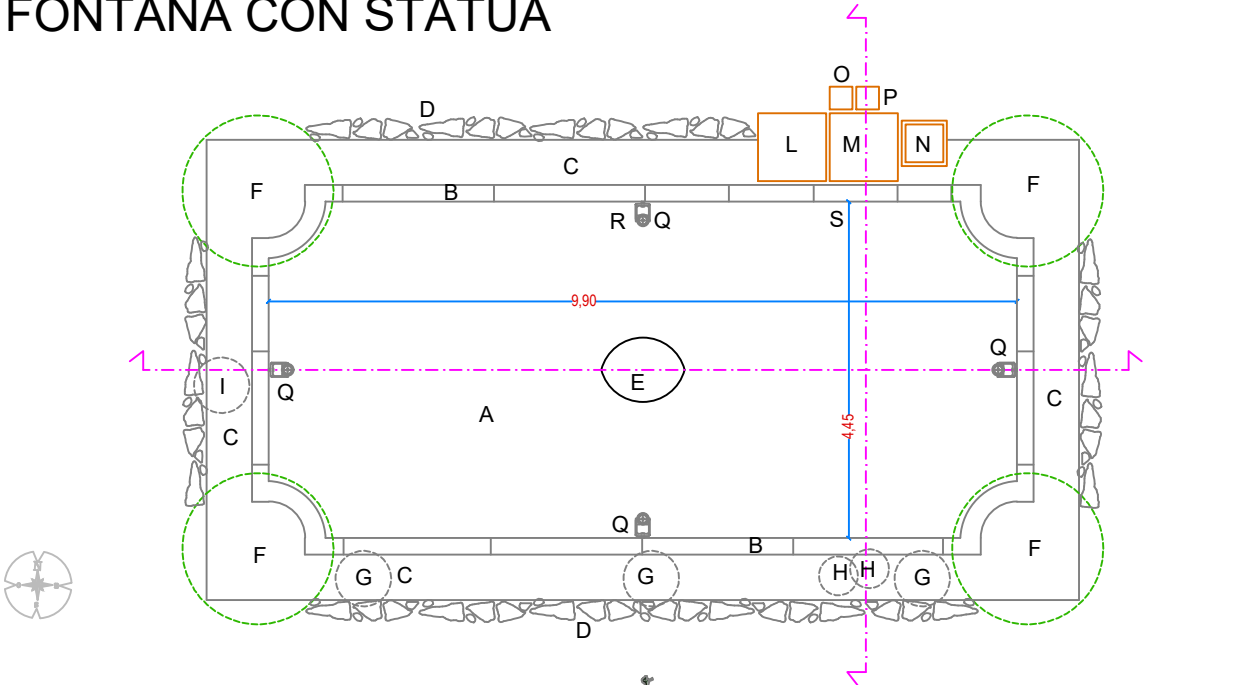
Il Capogruppo del RTP
Arch. Luca Mordini

INTERVENTI DI PROGETTO:
FONTANA CON STATUA
PIANTE PROSPETTI SEZIONI DI PROGETTO
PARTICOLARI COSTRUTTIVI
STATO SOVRAPPONTO

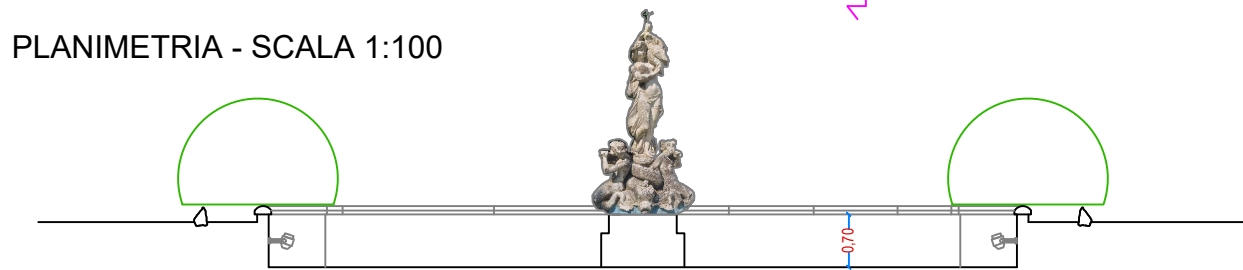
TAV. C12

SCALA 1:100

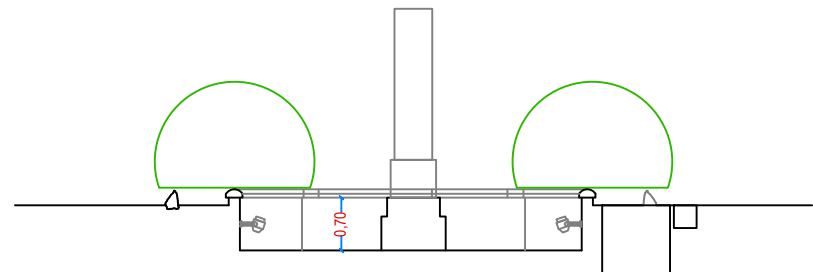
FONTANA CON STATUA



PLANIMETRIA - SCALA 1:100

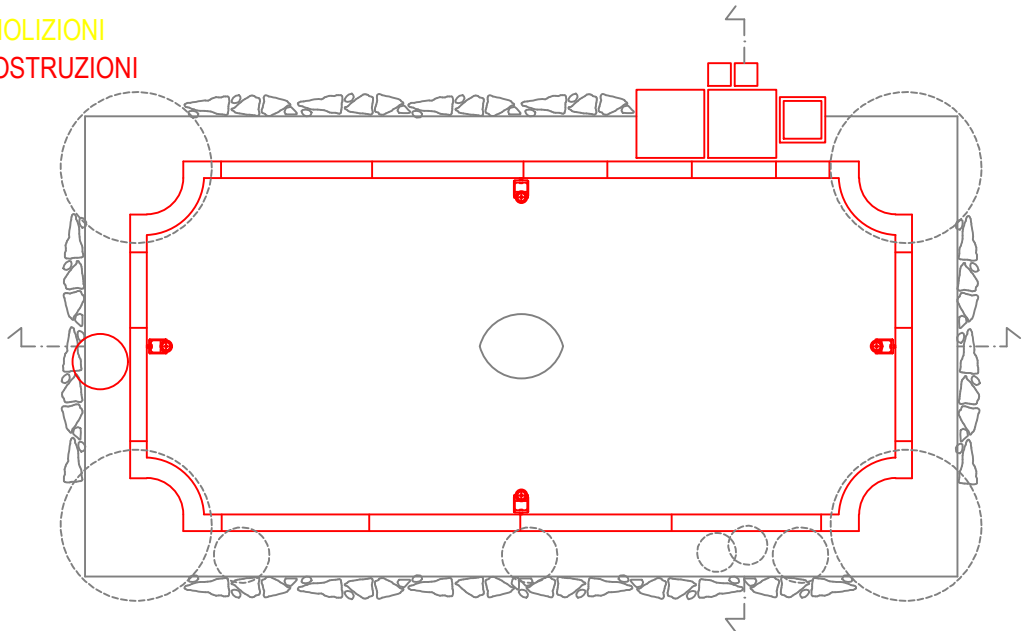


PROSPETTO-SEZIONE LONGITUDINALE - SCALA 1:100



PROSPETTO-SEZIONE TRASVERSALE - SCALA 1:100

DEMOLIZIONI
RICOSTRUZIONI



INTERVENTI DI PROGETTO

Fontana:

- Rimozione delle soglie in pietra di bordo della vasca per il successivo riposizionamento in sito previa catalogazione degli elementi e rilevamento della precisa posizione
- Pulizia e trattamento idrorepellente
- Sabbatura del fondo, delle pareti laterali della vasca e del basamento della statua in cemento
- Impermeabilizzazione della vasca
Malta premiscelata fibrinforzata, bicomponente ad elevata duttilità, a base di calce idraulica naturale (NHL) ed ECO-POZZOLANA, esente da cemento, di colore chiaro, in abbinamento a una rete in fibra di vetro A.R. alcali resistente spessore 1cm
- Rivestimento elastico bicomponente pigmentabile, resistente ai sali e ai raggi ultravioletti, a base di calce, Eco-Pozzolana e materiale riciclato, esente da cemento, per l'impermeabilizzazione e la protezione di elementi costruttivi di pregio storico artistico. Prodotto a bassissime emissioni di sostanze organiche volatili (VOC) spessore mm 2*

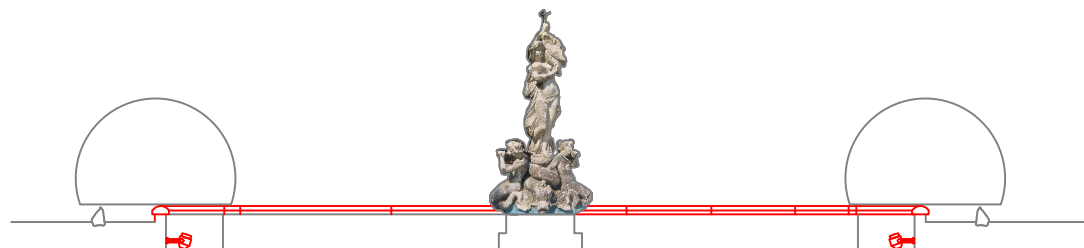
Statua:

- DISINFEZIONE da colonie di microrganismi autotrofi e/o eterotrofi mediante applicazione di biocida e successiva rimozione meccanica a impacco per eliminazione delle incrostazioni;
- RIMOZIONE di depositi superficiali coerenti e macchie solubili mediante accurato lavaggio delle superfici con spazzolini e spazzole di saggina, irroratori e spugne;
- RIMOZIONE di depositi superficiali coerenti, incrostazioni, concrezioni, fissativi alterati mediante applicazione di compresse imbevute di soluzione satura di sali inorganici o ammonio carbonato inclusi oneri relativi ai saggi per la scelta della soluzione e dei tempi di applicazione e alla successiva rimozione meccanica dei depositi solubilizzati mediante pennellesse, spazzole, bisturi e specilli;
- PROTEZIONE superficiale della statua in pietra per rallentarne il degrado con cere microcristalline date a pennello.

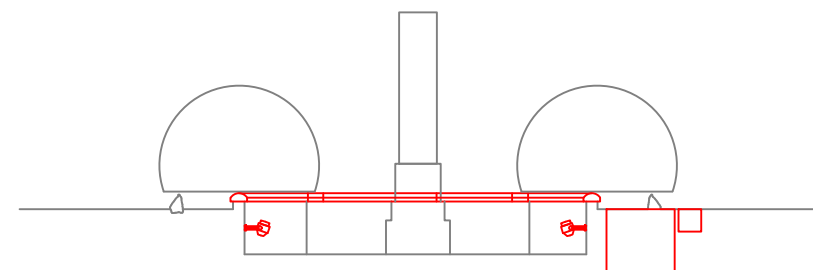
Lavorazione decisa a seguito della consultazione con ditta restauratrice in possesso della categoria OS2 - Superfici decorate di beni immobili del patrimonio culturale).

Impianti:

- Ripristino impianto di adduzione idrica e pescaggio pompa
- Rifacimento pozzetti in muratura di mattoni e coperchi in lamiera
- Sostituzione numero quattro faretti interni su modello degli esistenti ma con luce a LED



PROSPETTO-SEZIONE LONGITUDINALE - SCALA 1:100



PROSPETTO-SEZIONE TRASVERSALE - SCALA 1:100

PARTICOLARE FARETTO A IMMERSIONE IP68

BEL LIGHTING

Product datasheet **KOZI F** code: 8042F_...XX

Description

EN - New completely in cast stainless steel 316L. For use in immersion in fresh water. Operation up to 10m. Water temperature up to 30°C. Maximum depth 10m. Degree of protection IP68. Water depth up to 10m. Maximum depth 10m. Power 10W.

FR - Nouvelle conception en acier inoxydable massif 316L. À utiliser uniquement en immersion permanente dans l'eau. Opération jusqu'à 10m. Température de l'eau de 30°C. Niveau de protection IP68. Profondeur de l'eau jusqu'à 10m. Puissance 10W.

ACCESSORIES

LED strip 10W/1000mm (2000K/5000K/6500K) LED strip 10W/1000mm (2000K/5000K/6500K) LED strip 10W/1000mm (2000K/5000K/6500K)

ON REQUEST

Dimmerable version (0-10V) Dimmerable version (DALI) Dimmerable version (0-10V) Dimmerable version (DALI)

Technical data

Material: Cast stainless steel 316L

Power: 10W

Voltage: 230V AC

Frequency: 50/60Hz

Protection: IP68

Temperature: -20°C to +50°C

Humidity: 100%

Weight: 0.5kg

Dimensions: 100x100x100mm

Installation: 1. Drill a hole in the wall. 2. Insert the fixture into the hole. 3. Tighten the screw. 4. Connect the wires.

Energy label

Energy class: A

Energy consumption: 10W

Energy efficiency: A

Notes

Not intended for outdoor use. Not intended for use in areas with high humidity. Not intended for use in areas with high salt content. Not intended for use in areas with high acid content. Not intended for use in areas with high alkaline content. Not intended for use in areas with high oil content. Not intended for use in areas with high dust content. Not intended for use in areas with high vibration content. Not intended for use in areas with high shock content. Not intended for use in areas with high fire content. Not intended for use in areas with high explosion content. Not intended for use in areas with high radiation content. Not intended for use in areas with high magnetic field content. Not intended for use in areas with high electric field content. Not intended for use in areas with high sound content. Not intended for use in areas with high light content. Not intended for use in areas with high heat content. Not intended for use in areas with high cold content. Not intended for use in areas with high pressure content. Not intended for use in areas with high vacuum content. Not intended for use in areas with high speed content. Not intended for use in areas with high acceleration content. Not intended for use in areas with high deceleration content. Not intended for use in areas with high rotation content. Not intended for use in areas with high translation content. Not intended for use in areas with high vibration content. Not intended for use in areas with high shock content. Not intended for use in areas with high fire content. Not intended for use in areas with high explosion content. Not intended for use in areas with high radiation content. Not intended for use in areas with high magnetic field content. Not intended for use in areas with high electric field content. Not intended for use in areas with high sound content. Not intended for use in areas with high light content. Not intended for use in areas with high heat content. Not intended for use in areas with high cold content. Not intended for use in areas with high pressure content. Not intended for use in areas with high vacuum content. Not intended for use in areas with high speed content. Not intended for use in areas with high acceleration content. Not intended for use in areas with high deceleration content. Not intended for use in areas with high rotation content. Not intended for use in areas with high translation content.

BEL LIGHTING

Product datasheet **KOZI F** code: 8042F_...XX

Description

EN - New completely in cast stainless steel 316L. For use in immersion in fresh water. Operation up to 10m. Water temperature up to 30°C. Maximum depth 10m. Degree of protection IP68. Water depth up to 10m. Maximum depth 10m. Power 10W.

FR - Nouvelle conception en acier inoxydable massif 316L. À utiliser uniquement en immersion permanente dans l'eau. Opération jusqu'à 10m. Température de l'eau de 30°C. Niveau de protection IP68. Profondeur de l'eau jusqu'à 10m. Puissance 10W.

ACCESSORIES

LED strip 10W/1000mm (2000K/5000K/6500K) LED strip 10W/1000mm (2000K/5000K/6500K) LED strip 10W/1000mm (2000K/5000K/6500K)

ON REQUEST

Dimmerable version (0-10V) Dimmerable version (DALI) Dimmerable version (0-10V) Dimmerable version (DALI)

Technical data

Material: Cast stainless steel 316L

Power: 10W

Voltage: 230V AC

Frequency: 50/60Hz

Protection: IP68

Temperature: -20°C to +50°C

Humidity: 100%

Weight: 0.5kg

Dimensions: 100x100x100mm

Installation: 1. Drill a hole in the wall. 2. Insert the fixture into the hole. 3. Tighten the screw. 4. Connect the wires.

Energy label

Energy class: A

Energy consumption: 10W

Energy efficiency: A

Notes

Not intended for outdoor use. Not intended for use in areas with high humidity. Not intended for use in areas with high salt content. Not intended for use in areas with high acid content. Not intended for use in areas with high alkaline content. Not intended for use in areas with high oil content. Not intended for use in areas with high dust content. Not intended for use in areas with high vibration content. Not intended for use in areas with high shock content. Not intended for use in areas with high fire content. Not intended for use in areas with high explosion content. Not intended for use in areas with high radiation content. Not intended for use in areas with high magnetic field content. Not intended for use in areas with high electric field content. Not intended for use in areas with high sound content. Not intended for use in areas with high light content. Not intended for use in areas with high heat content. Not intended for use in areas with high cold content. Not intended for use in areas with high pressure content. Not intended for use in areas with high vacuum content. Not intended for use in areas with high speed content. Not intended for use in areas with high acceleration content. Not intended for use in areas with high deceleration content. Not intended for use in areas with high rotation content. Not intended for use in areas with high translation content.